

## TERMS & CONDITIONS

Samridhhi Automations Pvt Ltd (SAPL) warranties this product to be free from manufacturing defects as per the standard warranty terms conveyed by SAPL in writing. This non-transferable warranty is only for the first owners on the purchase made from SAPL's authorized dealers and its channel partners. SAPL will repair or replace this product as per the terms and conditions stated Below:

1. The warranty will be valid only against a valid purchase invoice and valid product serial/ID number. SAPL reserves the right to decline warranty service if the above documents are not presented or if the information contained is incomplete or found tampered with.
2. The warranty does not cover damage caused to the product due to improper installation or tampering by a customer.
3. Warranty does not apply to damages caused to the product by accident, lightning, fire or Acts of God, voltage fluctuations, excessive physical shock/impact/ drop or any external cause beyond normal operations.
4. In no event will SAPL be liable for any incidental, consequential, special, punitive, statutory, or indirect damages including without limitation, loss of products, revenues or use, or loss or corruption of data resulting from use of this product. SAPL's aggregate liability shall be limited to the purchase price of the product to the extent permitted by applicable law.
5. Warranty is not valid outside of India.

## **Service & Customer Care Details**

Samridhhi Automations Pvt. Ltd.

Plot No. 78, Sector-7, IIE SIDCUL, Haridwar-249403

Uttarakhand, India

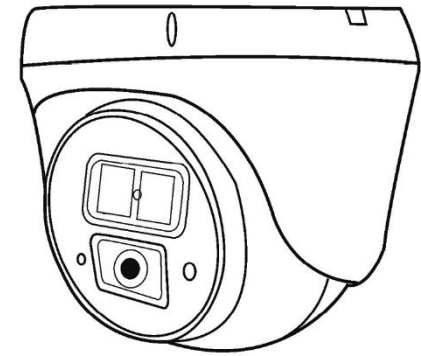
Customer support toll-free no.: 1800 1020 524

Email: [service@sparshsecuritech.com](mailto:service@sparshsecuritech.com)

[support@sparshsecuritech.com](mailto:support@sparshsecuritech.com)



## **Color+ AHD Dome Camera QUICK SETUP GUIDE**



**Note:** Before providing power to the camera, please read this user guide in detail. Do not attempt to disassemble the camera. If the camera is not working, please contact customer care for further support.

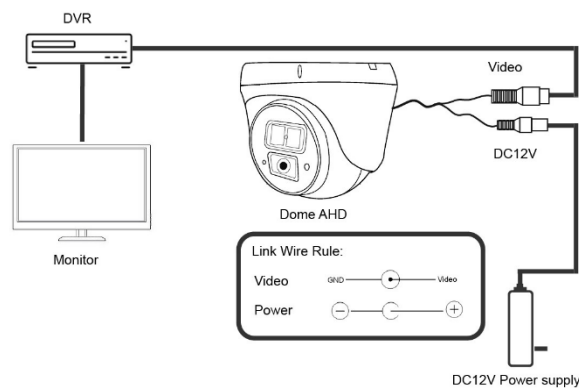
## BRIEF OF PRODUCT

- 2/5 MP resolution with HD technology
- Progressive scanning
- Long distance real-time transmission
- Supports ultra-low illumination
- True day night with IR cut filter (ICR)
- UTC control 4 in 1 output (AHD-TVI-CVI-CVBS)
- Provides color night vision

### Note:

- Please check the power supply thoroughly before applying power to the camera. The output voltage and current rating of the power supply must match the camera specifications. Ensure correct polarity while making connections.
- When using the camera in the thunderbolt conditions, please mount anti-thunder device or disconnect the power supply and cable.
- In order to capture high quality pictures, the power supply's cable and video output cable should not be too long.

## CONNECTION DIAGRAM



## TROUBLESHOOTING

- 1. No picture after providing power** - Check the output voltage from the power supply. Ensure the voltage at the camera end is DC 12V. Please check all the connecting cables and monitors are connected correctly or not.
- 2. The picture has flowing interference/ripples**- It may be caused by the AC ripples in the power supply output. Use a good quality power supply with low noise/ripple in the output. Check the monitor and peripheral equipment used.
- 3. The picture background color changes continuously**- The fluorescent lamp's electromagnetic field causes color roll. This is normal phenomenon of the cameras. Reducing the fluorescent lamp numbers or increasing the distance between the camera and the fluorescent lamps can improve it.
- 4. The picture is smeared**- The power supply's voltage might be unstable. Check if the connecting cables are connected properly. Ensure that the wires do not have high impedance.

## COLOR+ AHD DOME CAMERA

Congratulations on your purchase of this product. Our Color+ Series Cameras are equipped with more powerful image sensors. White light allows sensor to absorb more visible light, enabling cameras to continue produce color image even in complete darkness.

Please read this instruction manual carefully to ensure proper use of the product.

| <b>CAUTION</b><br>(Risk of electric shock-Do not open) |   |
|--|---|
| <b>SHOCK:</b>  | To reduce the risk of electric shock do not remove front or back cover. No user serviceable parts inside. Refer servicing manual. |
| <b>CAUTION:</b>  | To prevent electric shocks and risk of fire hazards, do not use other than specified power source.                                |

### Note:

- Avoid using the camera at too high or low temperatures. The operating temperature range is -30~60°C. (Recommended operating temperature is 10~50°C)
- Never make the camera face the sun or other extremely bright object. It can damage the CMOS.
- Do not mount the camera near the radiator or heater.